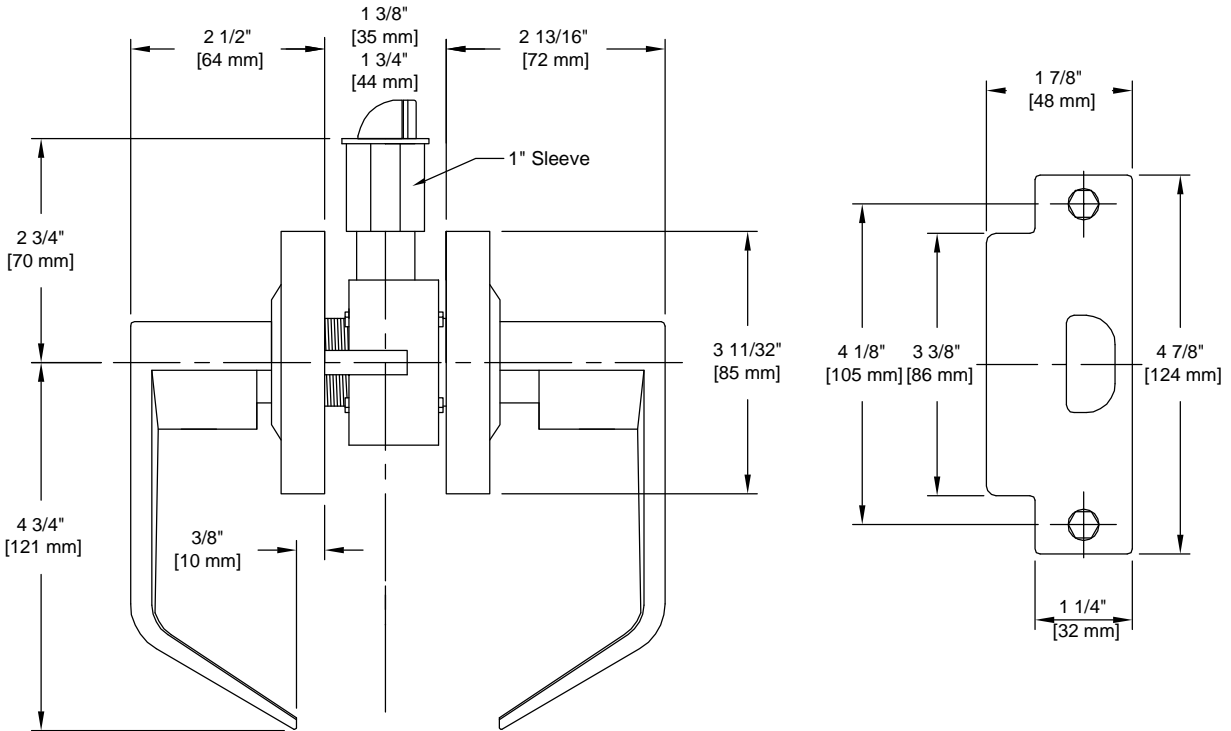


PRODUCT DATA SHEET

Product Description: Lock lever, storeroom, reversible, Schlage "SC 4 Keyway", ANSI Grade 2. Removable, non interchangeable core. Handles are fabricated from zinc and escutcheon is fabricated from stainless steel in a US26D satin chrome finish. The outside lever is always locked, entrance by key only. The inside lever is always unlocked providing emergency exit. Full length lever handle with 3/8" return. Free wheeling clutch design. ADA compliant. UL10C 3 hour fire rated. Ships with mounting hardware. 2 3/8" latch (product #CL60MM) sold separately.



Door Prep: Cross Bore 2 1/8+, Edge Bore 1+, Latch Face 1 1/8"x 2 1/4+
Backset: 2 3/4+
Door Thickness: Standard Doors 1 3/8+ to 1 3/4+
Cylinder: 6-Pin Removable Core
Strike Plate: 4 7/8+, 3 3/8" Lip Strike
Bolt: 1/2" Throw, Stainless Steel
ANSI/BHMA: A156.2 Grade 2

REKEY OPTIONAL



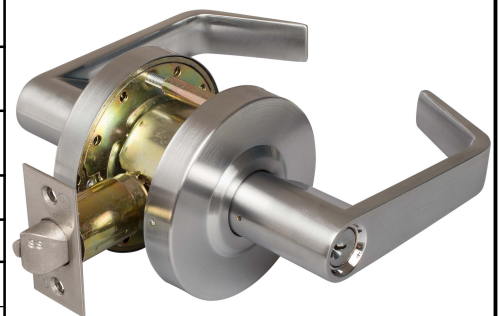
Overall Size: 6 13/32" W X 3 11/32" H X 2 13/16" D

Material: Zinc Handles, Stainless Steel Escutcheon

Finish: US26D Satin Chrome

Cross Reference

Manufacturer	Part Number



Description:

Lock Lever, Storeroom, Reversible, SAT Style Handle, Schlage "SC 4", UL 10C, ANSI Grade 2

Part Number:

M33050

Date

06/16

Rev.

04

Sheet 1 of 1