

WEED EATER

® Trademark

ENGLISH



Please do not return unit to retailer.
Por favor, no devuelva el aparato al lugar de compra.
Veuillez ne pas retourner l'outil au détaillant.

1-800-554-6723

www.weedeater.com

Operator's Manual Manual del Operador Manuel de L'utilisateur

FL1500 LE

ESPAÑOL

For Household Use Only



WARNING:

Read and follow all Safety Rules and Operating Instructions before using this product. Failure to do so can result in serious injury.

ADVERTENCIA:

Lea el manual del operador y siga todas las advertencias e instrucciones de seguridad. El no hacerlo puede resultar en lesiones graves.

AVERTISSEMENT:

Lire le manuel de l'utilisateur et bien respecter tous les avertissements et toutes les instructions de sécurité. Tout défaut de le faire pourrait entraîner des blessures graves.

Electrolux Home Products, Inc.
250 Bobby Jones Expressway
Augusta, GA 30907

 **From the Electrolux Group.** *The world's No.1 choice.*
KITCHEN, CLEANING AND OUTDOOR APPLIANCES COMBINED

Copyright ©2002 Electrolux Home Products, Inc.

530086312

4/23/02

FRANÇAIS

SAFETY RULES

⚠ WARNING: Failure to follow all Safety Rules and Precautions can result in serious injury.

KNOW YOUR UNIT

- Read your Operator's Manual carefully until you completely understand and can follow all warnings and safety rules before operating the unit.
- Restrict unit to users who understand and will follow all warnings and safety rules in this manual.

⚠ WARNING: Inspect the area before starting the unit. Remove all debris and hard objects such as rocks, glass, wire, etc. that can ricochet, be thrown, or otherwise cause injury or damage during operation.

- Use your unit as a blower for:
 - Sweeping debris or grass clippings from driveways, sidewalks, patios, etc.
 - Blowing grass clippings, straw, or leaves into piles, around joints, or between bricks.

PLAN AHEAD

- Always wear eye protection when operating, servicing, or performing maintenance on unit. Wearing eye protection will help to prevent rocks or debris from being blown or ricocheting into eyes and face which can result in blindness and/or serious injury. Eye protection should be marked ANSI Z87.
- Always wear foot protection. Do not go barefoot or wear sandals.
- Always wear respirator or face mask when working with unit in dusty environments.
- Secure hair above shoulder length. Secure or remove jewelry, loose clothing, or clothing with loosely hanging straps, ties, tassels, etc. They can be caught in moving parts.
- Do not operate unit when you are tired, ill, upset, or if you are under the influence of alcohol, drugs, or medication.
- Keep children, bystanders, and animals away from work area a minimum of 30 feet (10 meters) when starting or operating unit. Do not point blower nozzle in the direction of people or pets.

HANDLE FUEL WITH CAUTION, IT IS HIGHLY FLAMMABLE

- Eliminate all sources of sparks or flame (including smoking, open flames, or work that can cause sparks) in the areas where fuel is mixed, poured, or stored.
- Mix and pour fuel in an outdoor area; store fuel in a cool, dry, well ventilated place; use an approved, marked container for all fuel purposes.
- Do not smoke while handling fuel or while operating the unit.
- Make sure the unit is properly assembled and in good operating condition.
- Do not fill fuel tank while engine is running.
- Avoid spilling fuel or oil. Wipe up fuel spills before starting engine.

- Move at least 10 feet (3 meters) away from fuel and fueling site before starting engine.
- Always store gasoline in a container approved for flammable liquids.

OPERATE YOUR UNIT SAFELY

- Inspect unit before each use for worn, loose, missing, or damaged parts. Do not use until unit is in proper working order.
- Keep outside surfaces free from oil and fuel.
- Never start or run engine inside a closed room, building or other unventilated area. Breathing exhaust fumes can kill.
- To avoid static electricity shock, do not wear rubber gloves or any other insulated gloves while operating unit.
- Do not set unit on any surface except a clean, hard area while engine is running. Debris such as gravel, sand, dust, grass, etc. could be picked up by the air intake and thrown out through discharge opening, damaging unit, property, or causing serious injury to bystanders or operator.
- Avoid dangerous environments. Do not use in unventilated areas or where explosive vapors or carbon monoxide build up could be present.
- Do not overreach or use from unstable surfaces such as ladders, trees, steep slopes, rooftops, etc. Keep firm footing and balance at all times.
- Never place objects inside the blower tubes; always direct the blowing debris away from people, animals, glass, and solid objects such as trees, automobiles, walls, etc. The force of air can cause rocks, dirt, or sticks to be thrown or to ricochet which can hurt people or animals, break glass, or cause other damage.
- Never run unit without the proper equipment attached. When using your unit as a blower, always install blower tube.
- Check air intake opening and blower tube frequently, always with engine stopped and spark plug disconnected. Keep vents and discharge tubes free from debris which can accumulate and restrict proper air flow and cause damage to the unit.
- Never use for spreading chemicals, fertilizers, or other substances which may contain toxic materials.
- To avoid spreading fire, do not use near leaf or brush fires, fireplaces, barbecue pits, ashtrays, etc.
- Use only for jobs explained in this manual.

MAINTAIN YOUR UNIT PROPERLY

- Have all maintenance other than the recommended procedures described in the Operator's Manual performed by an Authorized Service Dealer.
- Disconnect spark plug before performing maintenance except for carburetor adjustments.
- Use only recommended Weed Eater® parts; use of any other parts may void your warranty and cause damage to your unit.
- Empty the fuel tank before storing the unit. Use up fuel left in carburetor by starting the engine and letting it run until it stops.

- Do not use any accessory or attachment other than those recommended by the manufacturer for use with your unit.
- Do not store the unit or fuel in a closed area where fuel vapors can reach sparks or an open flame from water heaters, electric motors or switches, furnaces, etc.
- Store in a dry area out of reach of children.

SPECIAL NOTICE: Exposure to vibrations through prolonged use of gasoline powered hand tools could cause blood vessel or nerve damage in the fingers, hands, and joints of people prone to circulation disorders or abnormal swelling. Prolonged use in cold weather has been linked to blood vessel damage in otherwise healthy people. If symptoms occur such as numbness, pain, loss of strength, change in skin color or texture, or loss of feeling in the fingers, hands, or joints, discontinue the use of this tool and seek medical attention. An anti-vibration system does not guarantee the avoidance of these problems. Users who operate power tools on a continual and regular basis must monitor closely their physical condition and the condition of this tool.

SPECIAL NOTICE: This unit is equipped with a temperature limiting muffler and spark arresting screen which meets the requirements of California Codes 4442 and 4443. All U.S. forest land and the states of California, Idaho, Maine, Minnesota, New Jersey, Oregon, and Washington require by law that many internal combustion engines be equipped with a spark arresting screen. If you operate in a locale where such regulations exist, you are legally responsible for maintaining the operating condition of these parts. Failure to do so is a violation of the law. For normal homeowner use, the muffler and spark arresting screen will not require any service. After 50 hours of use, we recommend that your muffler be serviced or replaced by your Authorized Service Dealer.

ASSEMBLY

NOTE: It is normal for the fuel filter to rattle in the empty fuel tank.

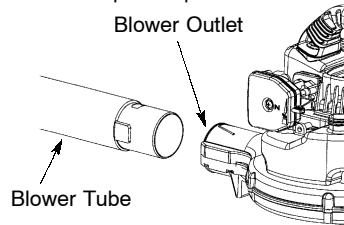
ASSEMBLY

WARNING: If received assembled, repeat all steps to ensure your unit is properly assembled and all fasteners are secure. Follow all safety information in the manual and on the unit.

- No tools are required for assembly.

BLOWER TUBE

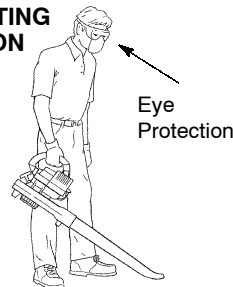
- Push the blower tube into the blower outlet until it snaps into place.



USING YOUR UNIT

You **MUST** make sure the tube is secure before using the unit.

OPERATING POSITION



OPERATING TIPS

- To reduce the risk of hearing loss associated with sound level(s), hearing protection is required.
- Operate power equipment only at reasonable hours—not early in the morning or late at night when people might be disturbed. Comply with times listed in local ordinances. Usual recommendations are 9:00 a.m. to 5:00 p.m., Monday through Saturday.
- To reduce noise levels, operate power blowers at the lowest possible throttle speed to do the job.
- To reduce noise levels, limit the number of pieces of equipment used at any one time.
- Use rakes and brooms to loosen debris before blowing.
- In dusty conditions, slightly dampen surfaces when water is available.
- Conserve water by using power blowers instead of hoses for many lawn and garden applications, including areas such as gutters, screens, patios, grills, porches, and gardens.
- Watch out for children, pets, open windows, or freshly washed cars. Blow debris away safely.
- Use the full blower tube extension so the air stream can work close to the ground.
- After using blowers and other equipment, **CLEAN UP!** Dispose of debris in trash receptacles.

FUELING

WARNING: Remove fuel cap slowly when refueling.

This engine is certified to operate on unleaded gasoline. Gasoline must be mixed with a good quality synthetic 2-cycle air-cooled engine oil designed to be mixed at a ratio of 40:1. Poulan/Weed Eater brand synthetic oil is recommended. (A 40:1 ratio is obtained by mixing 3.2 ounces of oil with 1 gallon of unleaded gasoline). When mixing fuel follow the instructions printed on the container. Always read and follow the safety rules under **HANDLE FUEL WITH CAUTION.**

IMPORTANT

Experience indicates that alcohol blended fuels (called gasohol or using ethanol or methanol) can attract moisture which leads to separation and formation of acids during storage. Acidic gas can damage the fuel system of an engine while in storage. To avoid engine problems, empty the fuel system before storage for 30 days or longer. Drain the gas tank, start the engine and let it run until the fuel lines and carburetor are empty. Use fresh fuel next season.

STARTING

STOPPING YOUR ENGINE

- To stop the engine, move the throttle lever to the STOP position.


STARTING YOUR ENGINE

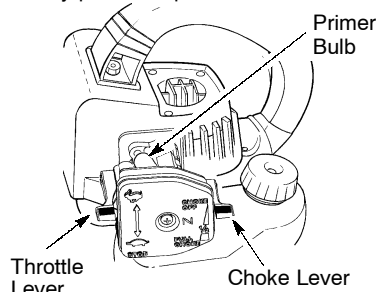
- Fuel engine. Move at least 10 feet (3 meters) away from the fueling site.
- Hold the unit in the starting position as shown. Make sure the blower end is directed away from people, animals, glass, and solid objects.



WARNING: When starting engine, hold the unit as illustrated. Do not set unit on any surface except a clean, hard area when starting engine or while engine is running. Debris such as gravel, sand, dust, grass, etc. could be picked up by the air intake and thrown out through the discharge opening, damaging the unit or property, or causing serious injury to bystanders or the operator.

STARTING A COLD ENGINE (or a warm engine after running out of fuel)


- Move throttle lever to the  position.
- Move choke lever to the FULL CHOKE position.
- Slowly press the primer bulb 6 times.



- Pull starter rope sharply until engine attempts to run, but no more than 5 pulls.
- Move choke lever to 1/2 CHOKE. Pull starter rope sharply until engine runs.

NOTE: If engine has not started after 5 pulls, repeat all of the above steps.


- After a 10 second warm-up, move the choke lever to CHOKE OFF.

NOTE: Move throttle lever to the  position for low speed.

- To stop engine, move the throttle lever to the STOP position.

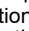
NOTE: If engine does not stop, move choke lever to FULL CHOKE.

STARTING A WARM ENGINE

- Move throttle lever to the  position.
- Move the choke lever to the CHOKE OFF position.
- Pull starter handle sharply until engine runs.

NOTE: If engine does not run after 5 pulls, repeat STARTING A COLD ENGINE procedure.

DIFFICULT STARTING (or starting a flooded engine)

Flooded engines can be started by placing the choke lever in the CHOKE OFF position and the throttle lever to the  position; then, pull the starter handle sharply to clear the engine of excess fuel. This could require pulling the starter handle many times depending on how badly the unit is flooded. If the unit still does not start, refer to TROUBLESHOOTING TABLE or call 1-800-554-6723.

MAINTENANCE

GENERAL RECOMMENDATIONS

The warranty on this unit does not cover items that have been subjected to operator abuse or negligence. To receive full value from the warranty, the operator must maintain unit as instructed in this manual. Various adjustments will need to be made periodically to properly maintain your unit.

CHECK FOR LOOSE FASTENERS AND PARTS

- Spark Plug Boot
- Air Filter
- Housing Screws

CHECK FOR DAMAGED OR WORN PARTS

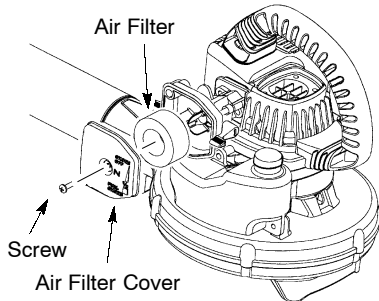
Contact an Authorized Service Dealer for replacement of damaged or worn parts.

- Throttle Lever - Ensure throttle lever functions properly by moving the throttle lever to the STOP position. Make sure engine stops; then restart engine and continue.
- Fuel Tank - Discontinue use of unit if fuel tank shows signs of damage or leaks.

INSPECT AND CLEAN UNIT AND DECALS

- After each use, inspect complete unit for loose or damaged parts. Clean the unit using a damp cloth with a mild detergent.
- Wipe off unit with a clean dry cloth.

CLEAN AIR FILTER



Cleaning the air filter:

A dirty air filter decreases engine performance and increases fuel consumption and harmful emissions. Always clean after every 5 hours of operation.

- Clean the cover and the area around it to keep debris from falling into the carburetor chamber when the cover is removed.
- Remove parts as illustrated.

NOTE: Do not clean filter in gasoline or other flammable solvent. Doing so can create a fire hazard or produce harmful evaporative emissions.

- Wash the filter in soap and water.
- Allow filter to dry.
- Apply a few drops of oil to the filter; squeeze filter to distribute oil.
- Replace parts.

REPLACE SPARK PLUG

Replace spark plug each year to ensure the engine starts easier and runs better. Set spark plug gap at 0.025 inch. Ignition timing is fixed, nonadjustable.

- Twist, then pull off spark plug boot.
- Remove spark plug from cylinder and discard.
- Replace with Champion RCJ-7Y spark plug and tighten with a 3/4 inch socket wrench (10-12 ft/lbs).
- Reinstall the spark plug boot.

INSPECT MUFFLER AND SPARK ARRESTING SCREEN

WARNING: The muffler on this product contains chemicals known to the State of California to cause cancer.

As your unit is used, carbon deposits build up on the muffler and spark arresting screen and must be removed to avoid creating a fire hazard or affecting engine performance.

For normal homeowner use, the muffler and spark arresting screen will not require any service. After 50 hours of use, we recommend that your muffler be serviced or replaced by your Authorized Service Dealer.

SERVICE

We recommend all service and adjustments not listed in this manual be performed by an Authorized Service Dealer.

CARBURETOR ADJUSTMENTS

Your carburetor is equipped with limiter caps. Damage will occur if you turn the needles beyond the limiter caps. Carburetor adjustment is a complicated task. We recommend that you take your unit to an Authorized Service Dealer.

STORAGE

WARNING: Perform the following steps after each use:

- Allow engine to cool, and secure the unit before storing or transporting.
- Store unit and fuel in a well ventilated area where fuel vapors cannot reach sparks or open flames from water heaters, electric motors or switches, furnaces, etc.
- Store unit with all guards in place. Position unit so that any sharp object cannot accidentally cause injury.
- Store unit and fuel well out of the reach of children.

NEED ASSISTANCE?

NEED ASSISTANCE?

Call 1-800-554-6723 for assistance.

NEED SERVICE PART?

Contact your dealer or call 1-800-554-6723.

TROUBLESHOOTING TABLE

WARNING: Always stop unit and disconnect spark plug before performing any of the recommended remedies below other than remedies that require operation of the unit.

TROUBLE	CAUSE	REMEDY
Engine will not start.	<ul style="list-style-type: none"> • Engine flooded. • Fuel tank empty. • Spark plug not firing. • Fuel not reaching carburetor. • Compression low. 	<ul style="list-style-type: none"> • See "Starting Instructions." • Fill tank with correct fuel mixture. • Install new spark plug. • Check for dirty fuel filter; replace. Check for kinked or split fuel line; repair or replace. • Contact Authorized Service Dealer.
Engine will not idle properly.	<ul style="list-style-type: none"> • Carburetor requires adjustment. • Crankshaft seals worn. • Compression low. 	<ul style="list-style-type: none"> • See "Carburetor Adjustments." • Contact Authorized Service Dealer. • Contact Authorized Service Dealer.
Engine will not accelerate, lacks power, or dies under a load.	<ul style="list-style-type: none"> • Air filter dirty. • Spark plug fouled. • Carburetor requires adjustment. • Carbon build up. • Compression low. 	<ul style="list-style-type: none"> • Clean or replace air filter. • Clean or replace spark plug; re-gap. • See "Carburetor Adjustments." • Contact Authorized Service Dealer. • Contact Authorized Service Dealer.
Engine smokes excessively.	<ul style="list-style-type: none"> • Choke partially on. • Fuel mixture incorrect. • Air filter dirty. • Carburetor requires adjustment. 	<ul style="list-style-type: none"> • Adjust choke. • Empty fuel tank and refill with correct fuel mixture. • Clean or replace air filter. • See "Carburetor Adjustments."
Engine runs hot.	<ul style="list-style-type: none"> • Fuel mixture incorrect. • Spark plug incorrect. • Carburetor requires adjustment. • Carbon build up. 	<ul style="list-style-type: none"> • See "Fueling Your Unit." • Replace with correct spark plug. • See "Carburetor Adjustments." • Contact Authorized Service Dealer.

LIMITED WARRANTY

ELECTROLUX HOME PRODUCTS, INC., warrants to the original purchaser that each new **Weed Eater** brand gasoline tool or attachment is free from defects in material and workmanship and agrees to repair or replace under this warranty any defective gasoline product or attachment as follows from the original date of purchase.

2 YEARS—Parts and Labor, when used for household purposes.

90 DAYS—Parts and Labor, when used for commercial, professional, or income producing purposes.

30 DAYS—Parts and Labor, if used for rental purposes.

This warranty is not transferable and does not cover damage or liability caused by improper handling, improper maintenance, or the use of accessories and/or attachments not specifically recommended by **ELECTROLUX HOME PRODUCTS, INC.**, for this tool. Additionally, this warranty does not cover tune-ups, spark plugs, filters, etc., that will wear and require replacement with reasonable use during the warranty period. This warranty does not cover pre-delivery setup or normal adjustments explained in the operator's manual.

THIS WARRANTY GIVES YOU SPECIFIC LEGAL RIGHTS, AND YOU MAY HAVE OTHER RIGHTS WHICH VARY FROM STATE TO STATE.

NO CLAIMS FOR CONSEQUENTIAL OR OTHER DAMAGES WILL BE ALLOWED, AND THERE ARE NO OTHER EXPRESS WARRANTIES EXCEPT THOSE EXPRESSLY STIPULATED HEREIN.

SOME STATES DO NOT ALLOW LIMITATIONS ON HOW LONG AN IMPLIED WARRANTY LASTS OR THE EXCLUSION OR LIMITATIONS OF INCIDENTAL OR CONSEQUENTIAL DAMAGES, SO THE ABOVE LIMITATIONS OR EXCLUSION MAY NOT APPLY TO YOU.

The policy of **ELECTROLUX HOME PRODUCTS, INC.**, is to continuously improve its products. Therefore, **ELECTROLUX HOME PRODUCTS, INC.**, reserves the right to change, modify, or discontinue models, designs, specifications, and accessories of all products at any time without notice or obligation to any purchaser.

U.S. EPA/CALIFORNIA EMISSION CONTROL WARRANTY STATEMENT

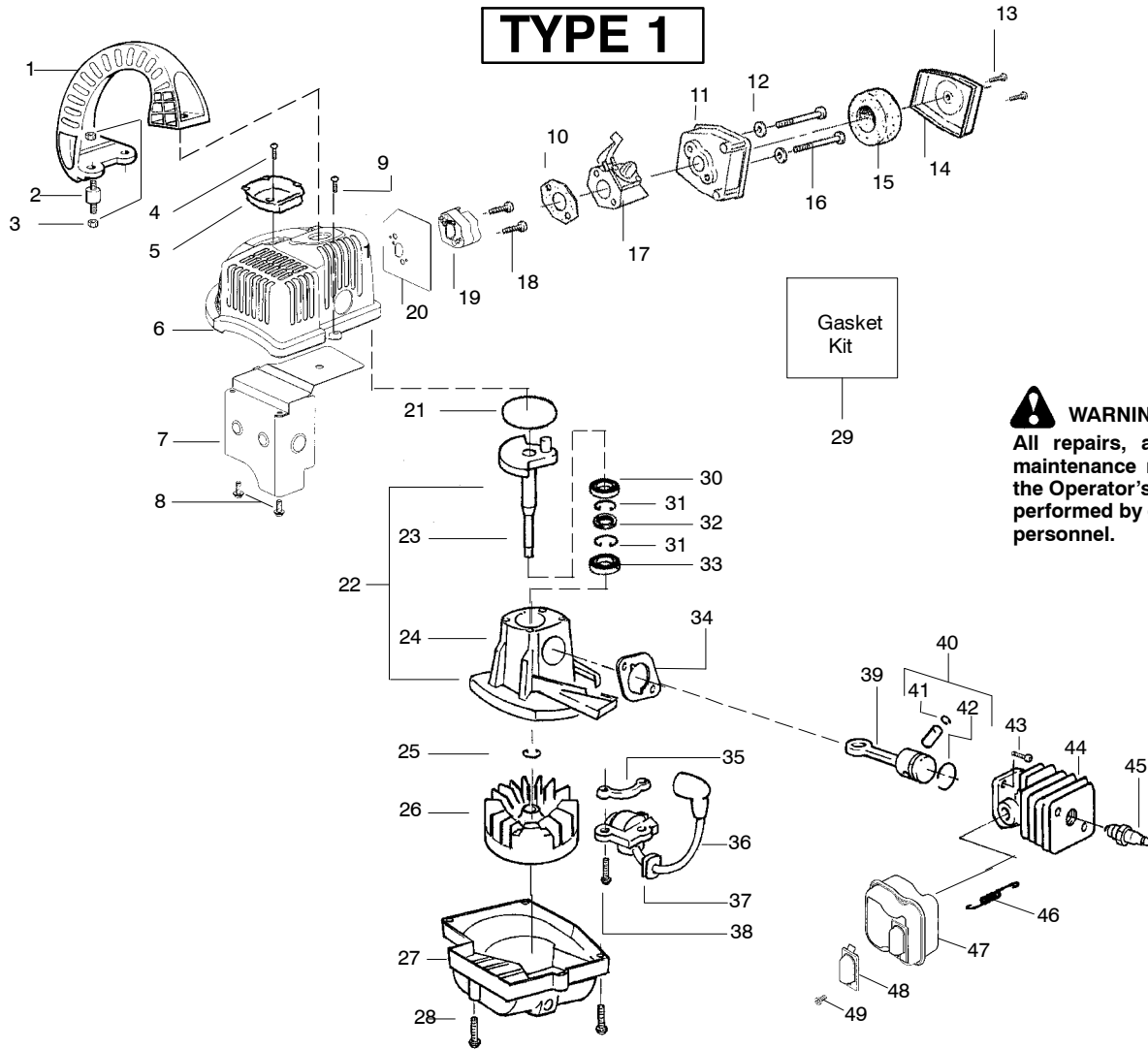
YOUR WARRANTY RIGHTS AND OBLIGATIONS: The U.S. Environmental Protection Agency/California Air Resources Board and **POULAN/WEED EATER, DIVISION OF WCI OUTDOOR PRODUCTS** are pleased to explain the emissions control system warranty on your year 2000–2003 small off-road engine. In California, all new small off-road engines must be designed, built, and equipped to meet the State's stringent anti-smog standards. **POULAN/WEED EATER**

must warrant the emission control system on your small off-road engine for the periods of time listed below provided there has been no abuse, neglect, or improper maintenance of your small off-road engine. Your emission control system includes parts such as the carburetor and the ignition system. Where a warrantable condition exists, POULAN/WEED EATER will repair your small off-road engine at no cost to you. Expenses covered under warranty include diagnosis, parts and labor. **MANUFACTURER'S WARRANTY COVERAGE:** If any emissions related part on your engine (as listed under Emissions Control Warranty Parts List) is defective or a defect in the materials or workmanship of the engine causes the failure of such an emission related part, the part will be repaired or replaced by POULAN/WEED EATER. **OWNER'S WARRANTY RESPONSIBILITIES:** As the small off-road engine owner, you are responsible for the performance of the required maintenance listed in your Owner's Manual. POULAN/WEED EATER recommends that you retain all receipts covering maintenance on your small off-road engine, but POULAN/WEED EATER cannot deny warranty solely for the lack of receipts or for your failure to ensure the performance of all scheduled maintenance. As the small off-road engine owner, you should be aware that POULAN/WEED EATER may deny you warranty coverage if your small off-road engine or a part of it has failed due to abuse, neglect, improper maintenance, unapproved modifications, or the use of parts not made or approved by the original equipment manufacturer. You are responsible for presenting your small off-road engine to a POULAN/WEED EATER authorized repair center as soon as a problem exists. Warranty repairs should be completed in a reasonable amount of time, not to exceed 30 days. If you have any questions regarding your warranty rights and responsibilities, you should contact your nearest authorized service center or call POULAN/WEED EATER at 1-800-554-6723. **WARRANTY COMMENCEMENT DATE:** The warranty period begins on the date the small off-road engine is purchased. **LENGTH OF COVERAGE:** This warranty shall be for a period of two years from the initial date of purchase. **WHAT IS COVERED: REPAIR OR REPLACEMENT OF PARTS.** Repair or replacement of any warranted part will be performed at no charge to the owner at an approved POU-

LAN/WEED EATER servicing center. If you have any questions regarding your warranty rights and responsibilities, you should contact your nearest authorized service center or call POULAN/WEED EATER at 1-800-554-6723. **WARRANTY PERIOD:** Any warranted part which is not scheduled for replacement as required maintenance, or which is scheduled only for regular inspection to the effect of "repair or replace as necessary" shall be warranted for 2 years. Any warranted part which is scheduled for replacement as required maintenance shall be warranted for the period of time up to the first scheduled replacement point for that part. **DIAGNOSIS:** The owner shall not be charged for diagnostic labor which leads to the determination that a warranted part is defective if the diagnostic work is performed at an approved POULAN/WEED EATER servicing center. **CONSEQUENTIAL DAMAGES:** POULAN/WEED EATER may be liable for damages to other engine components caused by the failure of a warranted part still under warranty. **WHAT IS NOT COVERED:** All failures caused by abuse, neglect, or improper maintenance are not covered. **ADD-ON OR MODIFIED PARTS:** The use of add-on or modified parts can be grounds for disallowing a warranty claim. POULAN/WEED EATER is not liable to cover failures of warranted parts caused by the use of add-on or modified parts. **HOW TO FILE A CLAIM:** If you have any questions regarding your warranty rights and responsibilities, you should contact your nearest authorized service center or call POULAN/WEED EATER at 1-800-554-6723. **WHERE TO GET WARRANTY SERVICE:** Warranty services or repairs shall be provided at all POULAN/WEED EATER service centers. call: 1-800-554-6723 **MAINTENANCE, REPLACEMENT AND REPAIR OF EMISSION RELATED PARTS:** Any POULAN/WEED EATER approved replacement part used in the performance of any warranty maintenance or repair on emission related parts will be provided without charge to the owner if the part is under warranty. **EMISSION CONTROL WARRANTY PARTS LIST:** Carburetor, Ignition System: Spark Plug (covered up to maintenance schedule), Ignition Module, Muffler including catalyst. **MAINTENANCE STATEMENT:** The owner is responsible for the performance of all required maintenance as defined in the owner's manual.

This engine is certified to be emissions compliant for the following use:

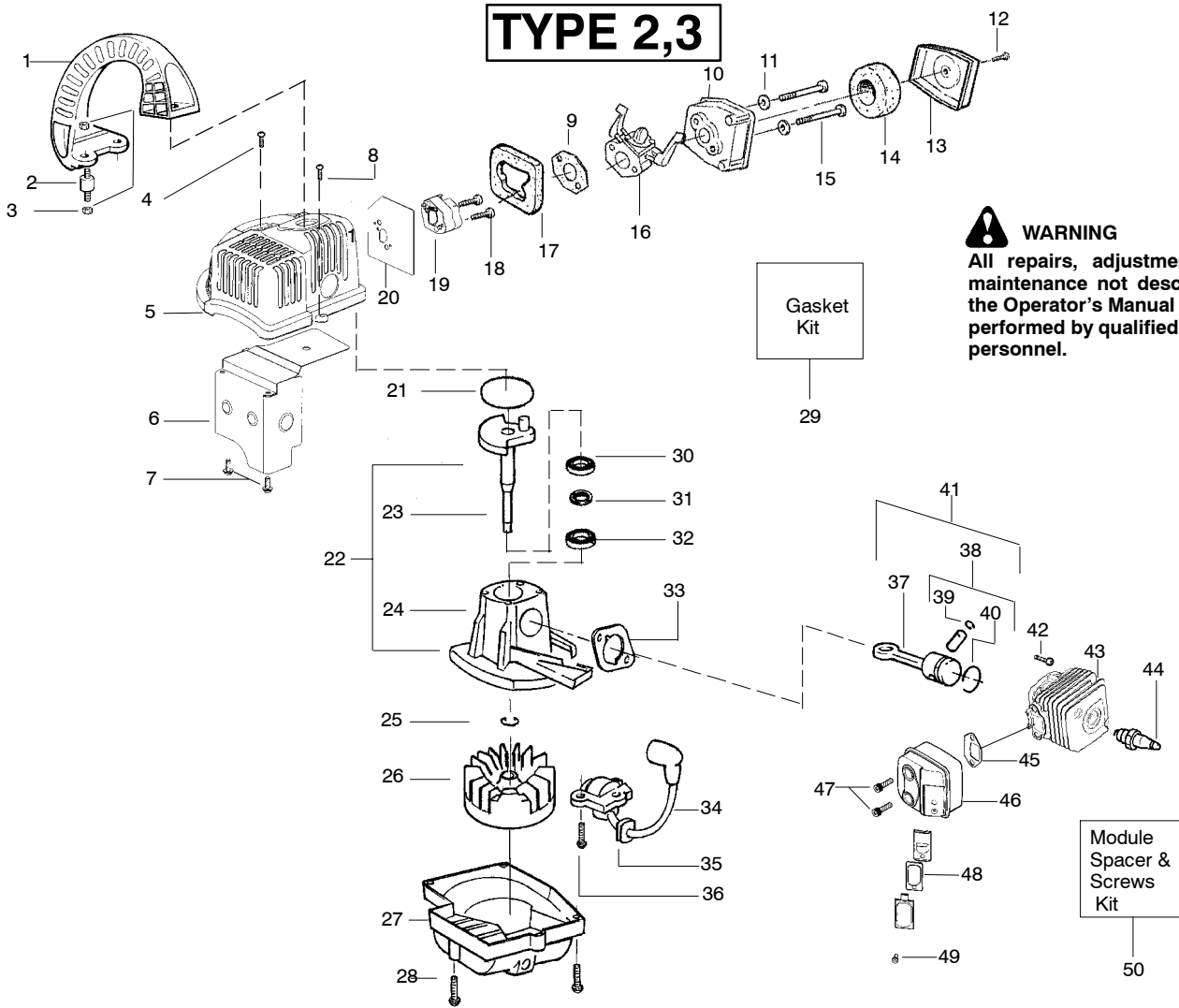
- Moderate (50 hours)
- Intermediate (125 hours)
- Extended (300 hours)



WARNING
All repairs, adjustments and maintenance not described in the Operator's Manual must be performed by qualified service personnel.

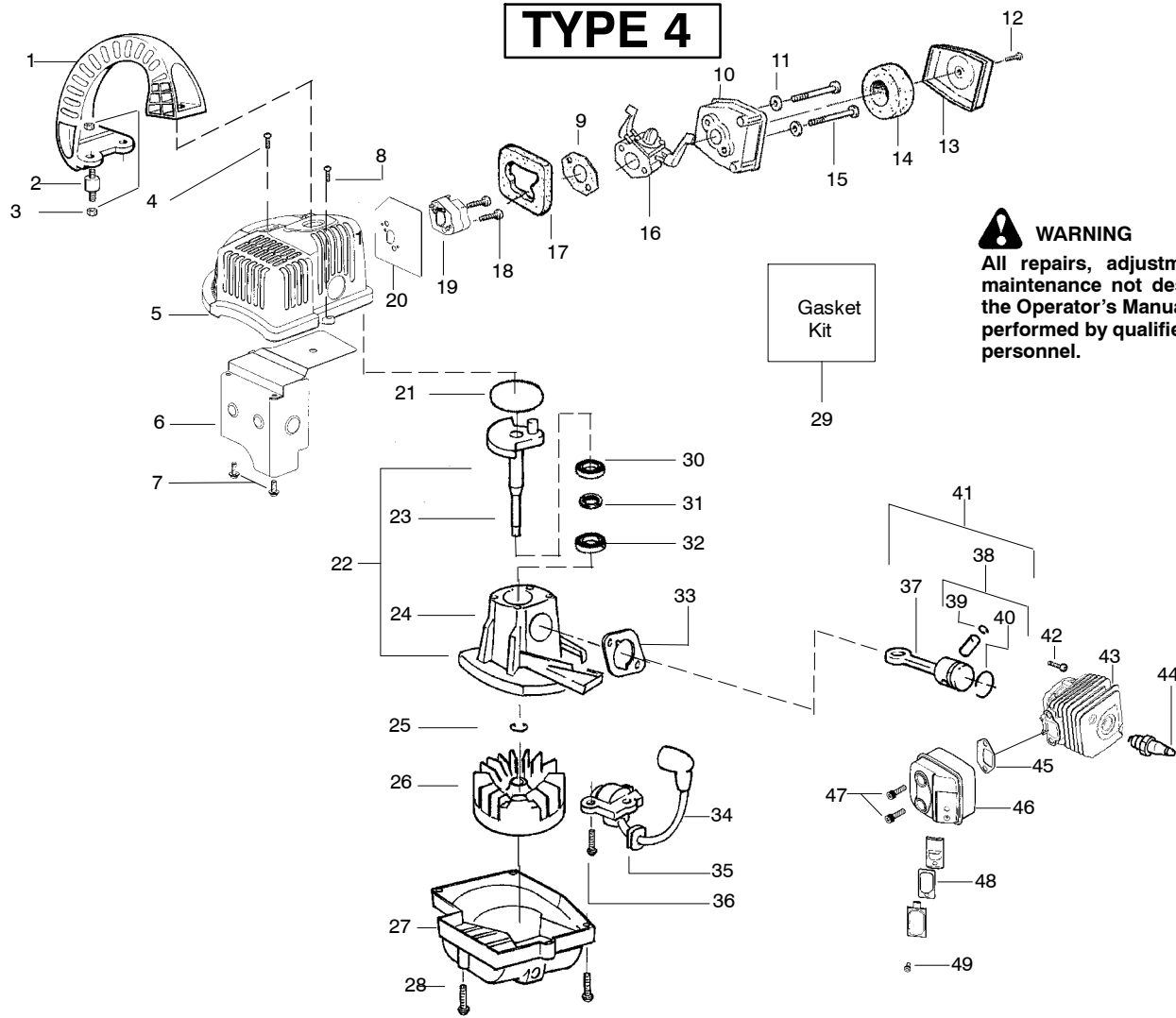
Ref.	Part No.	Description	Ref.	Part No.	Description
1.	530054429	Handle	25.	530015941	Retainer Ring (C'shaft)
2.	530054432	Isolator-Handle	26.	530069886	Assy.-Flywheel
3.	530016316	Nut	27.	530055335	Fan Housing
4.	530015810	Screw	28.	530015810	Screw
5.	530016258	Plate-Crankcase	29.	530071472	Kit-Gasket (incl. 10,20,21,34)
6.	530055336	Shroud	30.	530032125	Inner Bearing
7.	530055378	Shield-Heat	31.	530015945	Retainer Ring (C'case)
8.	530015805	Screw	32.	530019179	Seal-Crankcase
9.	530015880	Screw	33.	530032124	Bearing-Outer
10.	530071472	Gasket-Carb. (Kit)	34.	530071472	Gasket-Cylinder (Kit)
11.	530052333	Air Box	35.	530036145	Spacer-Ign. Module
12.	530015123	Washer	36.	530039163	Ignition Module
13.	530015892	Screw	37.	530019182	Grommet-Ign. Module
14.	530052332	Cover-Air Box	38.	530015954	Screw
15.	530047932	Foam-Air Filter	39.	530069945	Kit-Connecting Rod Assy.
16.	530016353	Screw	40.	530071357	Kit-Piston (Incl. 41 & 42)
17.	---	Kit-Carburetor Ass'y. (W-12 C1U-W12A)	41.	530015162	Wrist Pin Retainer
18.	530016014	Screw	42.	530055120	Piston Ring
19.	530056403	Adaptor-Carb.	43.	530015953	Screw
20.	530071472	Gasket-Cyl/Carb. Adaptor (Kit)	44.	530071359	Kit-Cylinder
21.	530071472	Gasket-C'case/Shroud (Kit)	45.	952030249	Spark Plug (RCJ-6Y)
22.	530071469	Assy.-C'case & C'shaft (Incl. 23,24,25, & 30-33)	46.	530042088	Spring-Muffler
23.	530052344	Assy.-Crankshaft	47.	530071470	Assy.-Muffler (incl. #46)
24.	530012462	Assy.-Crankcase (Incl. 30-33)	48.	530071361	Kit-Spark Aresstor
			49.	530015241	Screw

✓ = NEW PART NUMBER FOR THIS IPL * = REFER TO THE SERVICE REFERENCE INDICATED FOR MORE INFORMATION. (LOCATED AT END OF IPL)



Ref.	Part No.	Description	Ref.	Part No.	Description
1.	530054429	Handle	25.	530015941	Retainer Ring (C'shaft)
2.	530054432	Isolator-Handle	26.	530069886	Assy.-Flywheel
3.	530016316	Nut	27.	530055335	Fan Housing
4.	530015810	Screw	28.	530015810	Screw
5.	530055336	Shroud	29.	530071472	Kit-Gasket (incl. 9,20,21,33)
6.	530055378	Shield-Heat	30.	530032125	Inner Bearing
7.	530015805	Screw	31.	530019264	Seal-Crankcase
8.	530016349	Screw	32.	530055728	Bearing-Outer
9.	530071472	Gasket-Carb. (Kit)	33.	530071472	Gasket-Cylinder (Kit)
10.	530052333	Air Box	34.	530039163	Ignition Module
11.	530015158	Washer	35.	530019182	Grommet-Ign. Module
12.	530015892	Screw	36.	530016357	Screw
13.	530052332	Cover-Air Box	37.	530069945	Kit-Connecting Rod Assy.
14.	530047932	Foam-Air Filter	38.	530071833	Kit-Piston (Incl. 39 & 40)
15.	530016394	Screw	39.	530015162	Wrist Pin Retainer
16.	530071629	Kit-Carburetor Ass'y. (C1U-W12A)	40.	530055120	Piston Ring
17.	530057725	Foam-Air Dam	41.	530071785	Kit-Piston/Rod Assy. (Incl. 37,38)
18.	530016309	Screw	42.	530015953	Screw
19.	530057634	Adaptor-Carb.	43.	530012500	Cylinder
20.	530071472	Gasket-Cyl/Carb. Adaptor (Kit)	44.	952030249	Spark Plug (RCJ-6Y)
21.	530071472	Gasket-C'case/Shroud (Kit)	45.	530071472	Gasket-Muffler kit)
22.	530071680	Assy.-C'case & C'shaft (Incl. 23,24,25)	46.	530071778	Kit-Muffler (incl. #45,47-49)
23.	530052344	Assy.-Crankshaft	47.	530016338	Bolt-Muffler
24.	530012510	Assy.-Crankcase (Incl. 30-32)	48.	530071544	Kit-Spark Aresstor
			49.	530015241	Screw
			50.	530071731	Kit-Module spacer/screws

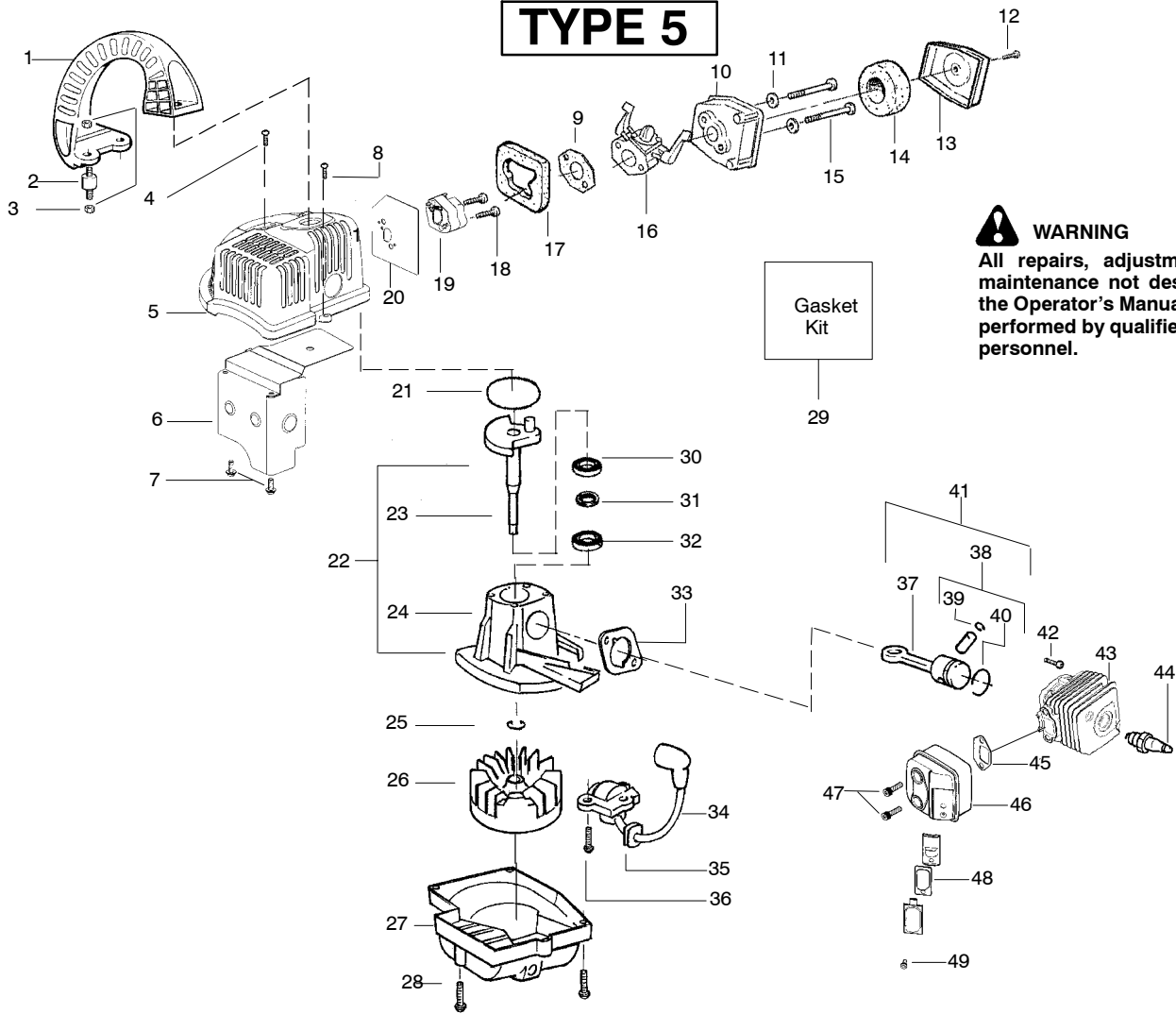
✓ = NEW PART NUMBER FOR THIS IPL ★ = REFER TO THE SERVICE REFERENCE INDICATED FOR MORE INFORMATION. (LOCATED AT END OF IPL)



Ref.	Part No.	Description	Ref.	Part No.	Description
1.	530054429	Handle	25.	530015941	Retainer Ring (C'shaft)
2.	530054432	Isolator-Handle	26.	530069886	Assy.-Flywheel
3.	530016316	Nut	27.	530058942	Fan Housing
4.	530015810	Screw	28.	530015810	Screw
5.	530055336	Shroud	29.	530071472	Kit-Gasket (incl. 9,20,21,33)
6.	530055378	Shield-Heat	30.	530032125	Inner Bearing
7.	530015805	Screw	31.	530019264	Seal-Crankcase
8.	530016349	Screw	32.	530055728	Bearing-Outer
9.	530071472	Gasket-Carb. (Kit)	33.	530071472	Gasket-Cylinder (Kit)
10.	530052333	Air Box	34.	530039163	Ignition Module
11.	530015158	Washer	35.	530019182	Grommet-Ign. Module
12.	530015892	Screw	36.	530016357	Screw
13.	530052332	Cover-Air Box	37.	530069945	Kit-Connecting Rod Assy.
14.	530047932	Foam-Air Filter	38.	530071833	Kit-Piston (Incl. 39 & 40)
15.	530016394	Screw	39.	530015162	Wrist Pin Retainer
16.	530071629	Kit-Carburetor Ass'y. (C1U-W12A)	40.	530055120	Piston Ring
17.	530057725	Foam-Air Dam	41.	530071785	Kit-Piston/Rod Assy. (Incl. 37,38)
18.	530016309	Screw	42.	530015953	Screw
19.	530057634	Adaptor-Carb.	43.	530012500	Cylinder
20.	530071472	Gasket-Cyl/Carb. Adaptor (Kit)	44.	952030249	Spark Plug (RCJ-6Y)
21.	530071472	Gasket-C'case/Shroud (Kit)	45.	530071472	Gasket-Muffler kit
22.	530071680	Assy.-C'case & C'shaft (Incl. 23,24,25)	46.	530071778	Kit-Muffler (incl. #45,47-49)
23.	530052344	Assy.-Crankshaft	47.	530016338	Bolt-Muffler
24.	530012510	Assy.-Crankcase (Incl. 30-32)	48.	530071544	Kit-Spark Aresstor
			49.	530015241	Screw

✓ = NEW PART NUMBER FOR THIS IPL

* = REFER TO THE SERVICE REFERENCE INDICATED FOR MORE INFORMATION. (LOCATED AT END OF IPL)



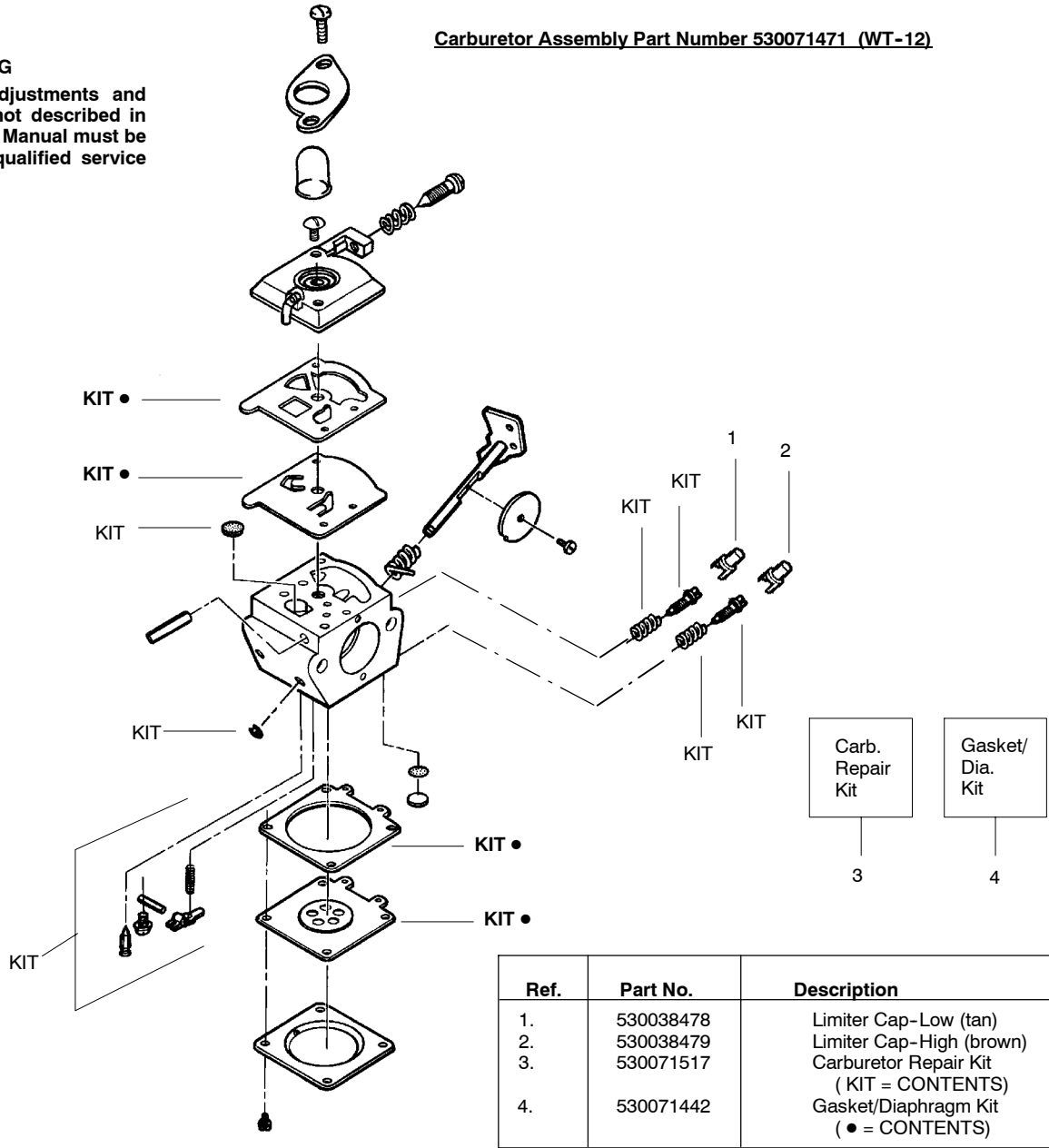
WARNING
All repairs, adjustments and maintenance not described in the Operator's Manual must be performed by qualified service personnel.

Ref.	Part No.	Description	Ref.	Part No.	Description
1.	530054429	Handle	25.	530015941	Retainer Ring (C'shaft)
2.	530054432	Isolator-Handle	26.	530069886	Assy.-Flywheel
3.	530016316	Nut	27.	530058942	Fan Housing
4.	530015810	Screw	28.	530015810	Screw
5.	530057102	Shroud	29.	530071472	Kit-Gasket (incl. 9,20,21,33)
6.	530055378	Shield-Heat	30.	530032125	Inner Bearing
7.	530015805	Screw	31.	530019264	Seal-Crankcase
8.	530016349	Screw	32.	530055728	Bearing-Outer
9.	530071472	Gasket-Carb. (Kit)	33.	530071472	Gasket-Cylinder (Kit)
10.	530052333	Air Box	34.	530039163	Ignition Module
11.	530015158	Washer	35.	530019182	Grommet-Ign. Module
12.	530015892	Screw	36.	530016357	Screw
13.	530052332	Cover-Air Box	37.	530069945	Kit-Connecting Rod Assy.
14.	545082301	Foam-Air Filter	38.	530071833	Kit-Piston (Incl. 39 & 40)
15.	530016429	Screw	39.	530015162	Wrist Pin Retainer
16.	530071629	Kit-Carburetor Ass'y. (C1U-W12A)	40.	530055120	Piston Ring
17.	530057725	Foam-Air Dam	41.	530071785	Kit-Piston/Rod Assy. (Incl. 37,38)
18.	530016309	Screw	42.	530015953	Screw
19.	530057634	Adaptor-Carb.	43.	530012500	Cylinder
20.	530071472	Gasket-Cyl/Carb. Adaptor (Kit)	44.	952030249	Spark Plug (RCJ-6Y)
21.	530071472	Gasket-C'case/Shroud (Kit)	45.	530071472	Gasket-Muffler kit
22.	530071680	Assy.-C'case & C'shaft (Incl. 23,24,25)	46.	530071778	Kit-Muffler (incl. #45,47-49)
23.	530052344	Assy.-Crankshaft	47.	530016338	Bolt-Muffler
24.	530012510	Assy.-Crankcase (Incl. 30-32)	48.	530071544	Kit-Spark Aresstor
			49.	530015241	Screw

✓ = NEW PART NUMBER FOR THIS IPL ★ = REFER TO THE SERVICE REFERENCE INDICATED FOR MORE INFORMATION. (LOCATED AT END OF IPL)

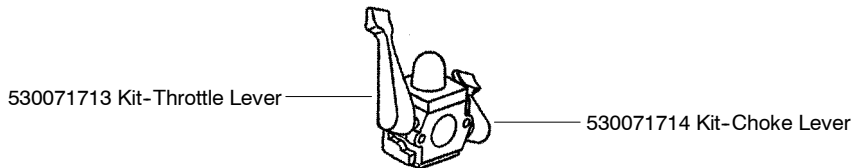
WARNING
All repairs, adjustments and maintenance not described in the Operator's Manual must be performed by qualified service personnel.

Carburetor Assembly Part Number 530071471 (WT-12)



Ref.	Part No.	Description
1.	530038478	Limiter Cap-Low (tan)
2.	530038479	Limiter Cap-High (brown)
3.	530071517	Carburetor Repair Kit (KIT = CONTENTS)
4.	530071442	Gasket/Diaphragm Kit (● = CONTENTS)

Kit - Carburetor Assy # 530071629 - C1U-W12A



Note: No Repair kits are available for this carburetor, please order the complete assembly part number 530-071629 (C1U-W12A)