

SPECIFICATION DATA

Catalog #	Date	Type
Project	Prepared by	
Comments		

Normal Ballast Factor

96 T12HO UNV

Professional Series

Performance Guide



T12HO SYSTEMS

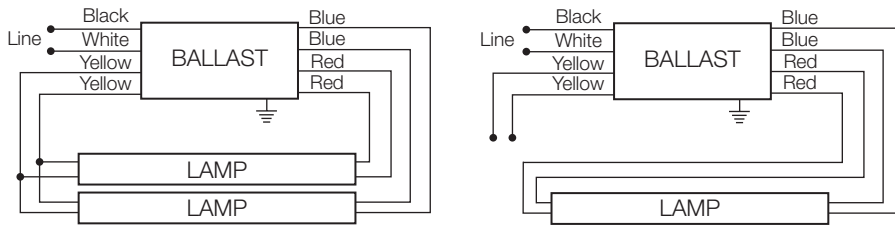
QUICKTRONIC® T12HO Rapid Start Electronic Fluorescent Ballasts Universal Voltage (120-277V)

Item Number	OSRAM SYLVANIA Description	Input Current (AMPS) @120/277V	Lamp ¹ Type	Rated ² Lumens (lm)	No. of Lamps	Ballast Factor (BF)	System Lumens	Input Power (W) @120/277V	System Efficacy (lm/W) @120/277V	BEF ³
50319	QTP2x96T12HO/UNV	1.65/0.71	F96T12HO	9050	2	0.85	15,385	196	78	0.43
		1.38/0.60	F96T12HO/SS	8000	2	0.90	14,400	164	88	0.55
		1.30/0.56	F72T12HO	6250	2	0.90	11,250	154	73	0.58
		1.10/0.47	F60T12HO	5200	2	0.90	9360	132	71	0.68
		0.88/0.38	F48T12HO	4050	2	0.90	7290	104	70	0.87
		0.88/0.38	F96T12HO	9050	1	0.92	8325	104	80	0.88

- 1: Also compatible with other manufacturer's equivalent lamp types that meet ANSI standards. * New Product.
- 2: 96T12HO rated lamp lumens and performance data based on F96T12CW/HO/SS and F96T12/D41/HO series lamps.
- 3: Ballast Efficiency Factor (BEF) shown = (Ballast Factor x 100) divided by Input Power (Note: calculation based on lowest wattage value).
- 50319 replaces discontinued item numbers 49883 QT2x96/120 HO and 49884 QT 2x96/277HO

Specifications
Data based on F96T12HO

- Starting Method: Rapid Start
- Circuit Type: Series
- Starting Temp:⁴ -20°F (-29°C) for F96T12HO; 60°F (16°C) for SUPERSAVER F96T12HO/SS
- Lamp CCF: Less than 1.7
- Lamp Frequency: >20kHz
- Low THD: <10%
- Voltage Range: ±10% of Rated Input
- Input Frequency: 50/60 Hz
- Power Factor: >98%
- cUL Listed Class P, Type 1 Outdoor
- 75°C Max Case Temperature
- FCC 47CFR Part 18 Non-Consumer
- ANSI C62.41 Cat A. Transient Protection
- Remote Mounting: Contact OSI for remote mounting options.
- Class A Sound Rating
- 4 Operation below 50°F (10°C) may affect light output or lamp operation – see "Low Temp. Starting" definition.



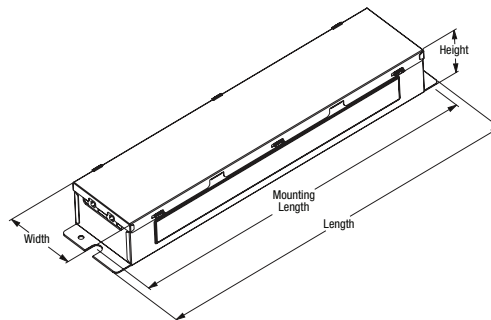
Note: For one lamp application, individually cap each yellow lead. Insulate to 600 volts.

QUICKTRONIC 2x96T12HO

Dimensions:
Overall: 11.8" L x 2.15" W x 1.61" H
Mounting: 11.0"

Packaging:
Quantity: 6 pieces
Weight: 2.77 lbs ea. (1260 grams)

Wiring:
Leads



System Life / Warranty

QUICKTRONIC products are covered by the QUICK 60+® warranty, a comprehensive warranty. For additional details, refer to the QUICK 60+ warranty bulletin.

OSRAM SYLVANIA
National Customer Service and Sales Center
1-800-LIGHTBULB
(1-800-544-4828)
www.sylvania.com

Specifications subject to change without notice.

Item Number _____ 50319 QTP 2 x 96T12 / HO / UNV _____ Line Voltage (120-277V)
QUICKTRONIC _____ System Type
Number of Lamps _____ Primary Lamp Type